



Be Crafty.

Technique Tutorial

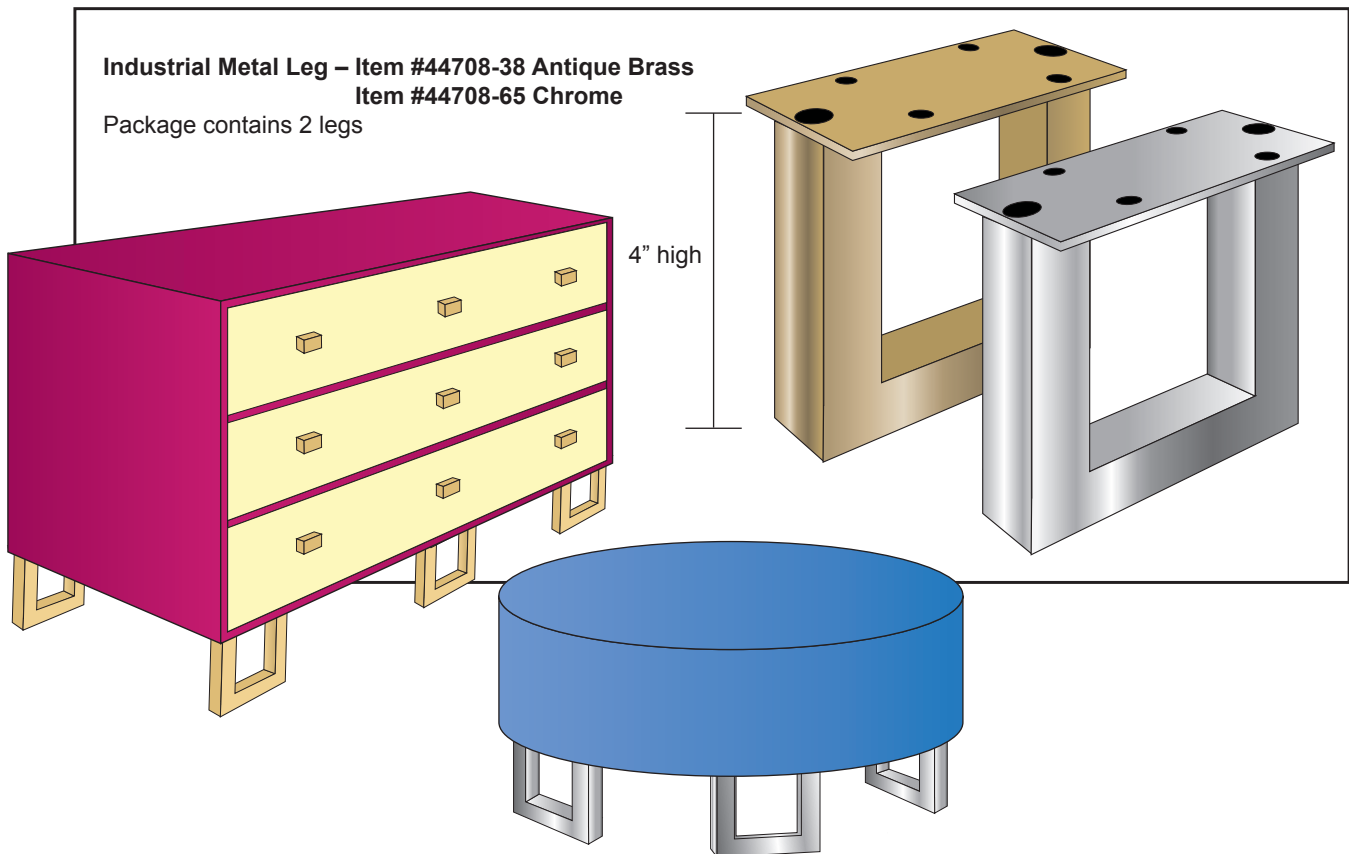
How to attach Dritz® Industrial Metal Legs to furniture

Do you have a favorite dresser that could use a little TLC—or perhaps a great flea market furniture find that's just begging for an update?

Have you thought of changing out the legs?

Our sophisticated industrial Metal Legs are 4" high – a great height for dressers, shelving units, footstools, etc. Or let your imagination run wild, and take a less traditional approach! Add an extra leg to the center front and back of a dresser (6, total), or place two at each corner (8, total). So many possibilities.

Our Industrial Metal Legs are easy to attach and provide an instant makeover for those woebegone pieces. So rev up your drill and let's get started!





Be Crafty.

Technique Tutorial

How to attach Dritz® Industrial Metal Legs to furniture (continued)

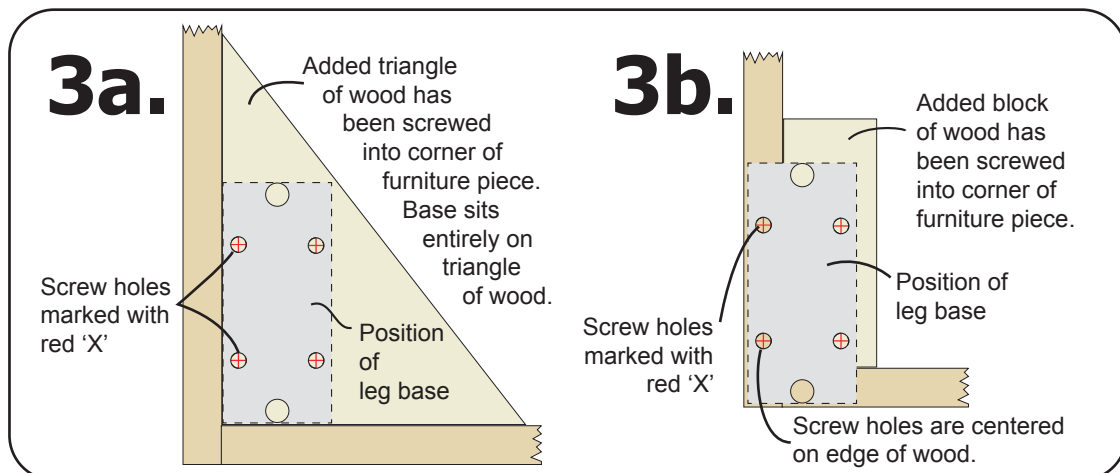
Supplies per project:

- Furniture piece to be upcycled
- 4 industrial metal legs
- 16, #8 wood screws (See step 4 for screw length)
- Screwdriver – type determined by selected screw
- Electric drill with appropriately sized drill bit
- Protective eyewear

Planning Leg Placement:

1. Turn project over on protected work surface and remove old legs. For secure leg placement, examine the bottom of your piece of furniture. You need a flat piece of solid wood at the base on which to attach the legs.
2. If the base of your piece does not have a solid piece of wood on which to attach the legs, you will need to reinforce corners with a block of wood. All 4 screw holes on the leg must connect with wood.
3. Plan the position of the legs so the long edge is parallel to one side of the furniture piece. Add the corner reinforcement (**3a**, **3b**). Be sure any nails or screws used to attach the block of wood do not interfere with the screws used to attach the legs.

Do not plan screws to be too close to the edge of your furniture piece. The base plate of the leg measures 1-3/4" x 3-3/4". This plate should be flush to the edge of the furniture, or inset 1/2" to 5/8" from the edge. If your furniture has a narrow edge as in diagram **3b**, be sure the screw is centered within this edge. Holding the leg firmly, use a pen or pencil to trace the screw holes.





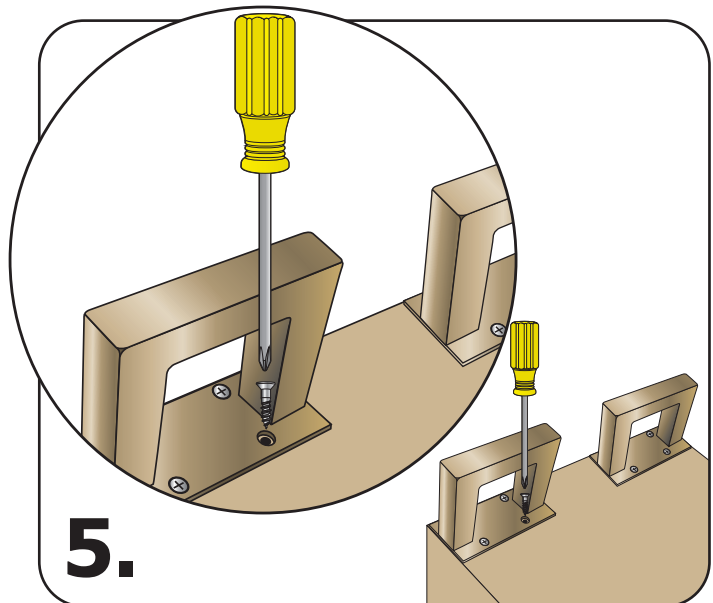
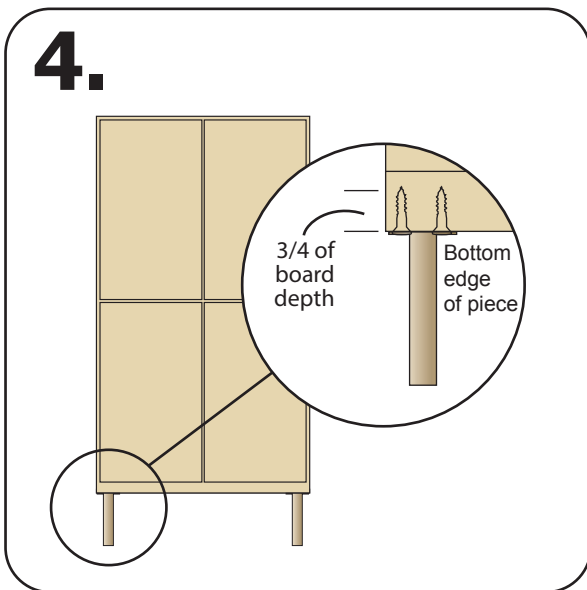
Be Crafty.

Technique Tutorial

How to attach Dritz® Industrial Metal Legs to furniture (continued)

Screw Length:

4. Mounting screws should never show on any piece of furniture. Generally the length of the screw should be about $\frac{3}{4}$ of the depth of the board into which it is screwed. For example, if the wood is $\frac{5}{8}$ " thick, the screw should be $\frac{1}{2}$ " long; if the wood is 1" thick, the screw should be $\frac{3}{4}$ " long **(3)**.



Attaching Legs:

5. Carefully drill a hole at the center of each mark making sure you do not penetrate the opposite side of the wood. Use a screwdriver to screw each leg securely into place **(4)**. Once all legs are attached, carefully turn the piece right side up and step back to admire your work.

TIP:

Use a drill bit about half the size of the actual screw to create a "pilot hole". This helps ensure exact positioning and helps prevent cracking the wood when the larger screw is drilled in.

